



B.ADH

STRUCTURAL EPOXY ADHESIVE

Adhesion promoter for secondary laminations

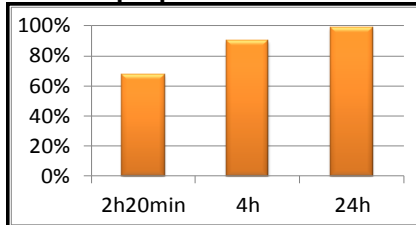
Density: 1,00 g/cm³ Viscosity: 3.700 Mpa·s

Above and under water cure capable system



| PROPERTY | UNITS | VALUE |
|---|-------------------|---------------|
| Resistance to crack propagation | kN | 10,51 |
| Resistance to failure in interlaminar mode - CC | kJ/m ² | 0,482 ± 0,142 |
| Resistance to failure in interlaminar mode - MCC | kJ/m ² | 0,494 ± 0,149 |
| Resistance to failure in interlaminar mode - MBT | kJ/m ² | 0,453 ± 0,071 |
| Shear resistance on steel | MPa | 30,49 |
| Conservation of shear resistance in wet environment | % | 98,70 |

Mechanical properties evolution vs Time



90% of the properties are obtained after 4h at 25° C.
Time measures for 1 mm thickness test sample

| Temperature (° C) | Gel time (hh:mm) |
|----------------------------|------------------|
| Gel time on 70g @ 25°C | 25min |
| Gel time on 5mm film @25°C | 60min |
| Clamp time @ 25°C | 2 to 4 h |
| Gel time on 500g @ 25°C | 20 min |

Gel time measures according to ISO 2535 70 gr @ 23°C in air

HOW TO USE

B.ADH rheology is close to a universal grease, making the mixing and application very easy with a spatula or even with a brush.

The surface should be clean, dust-free and degreased. Prepare all surfaces by abrading with medium grit paper or other suitable abrasive, remove dust then wipe with acetone, MEK or similar solvents if possible.

The vertical sagging limit of 10mm on vertical applications & 20mm on horizontal applications will enable to bond bulkheads with 20 mm diameter fillet joints.

HEALTH AND SAFETY

It is advised to follow basic rules such as avoiding skin contact, wear masks when producing dust. Please read our standard health and safety sheet for more information.



The data provided in this document is the result of tests and is believed to be accurate. We do not accept any responsibility over the mishandling of these products and our liability is limited strictly to the value of the products we manufacture and supply.

For more information, please visit us at: www.compositepatch.com